



Ariete NS2006

Homogenizer & High Pressure Pump Technical datasheet

The Ariete series is the state-of-the-art technology for powerful reliable high pressure machines and customized solutions. The Ariete machines, compliant to EU safety rules (CE standards) and built according to EN ISO 9001:2008 Quality System, are the best fit for pharmaceutical, dairy, food & beverage, biotechnology, chemical and cosmetics industries.

Liquid end

- High quality stainless steel and special high wear resistant materials for best mechanical and corrosion resistance performance

- 3-A and electropolished versions available
- Ball (PVB) and poppet valves (PVP) interchangeable into the same block design for maximum product handling flexibility
- Aseptic version compression block available as option, with sterile condensate packing flushing
- Various materials for pumping plungers
- Monoblock construction, up to 600 bar, or multiblock, up to 1500 bar forged high grade Duplex or Super Duplex SS alloy

Homogenizing valve

- One stage (standard on homogenizers) with hand wheel adjustment
- High efficiency homogenizing valve, based on advanced fluid dynamics concepts
- Engineered for easy maintenance and cleaning
- Second homogenizing stage as optional
- Wear parts made of tungsten carbide, ceramics as option

Ariete NS2006

Homogenizer & High Pressure Pump

Available up to 1500 bar, suitable for CIP and SIP, the Ariete machines can be supplied with all necessary customizations for easy integration in any process line, sanitary or aseptic. The wide range of available materials, linear plunger velocity allow Ariete machines to perform at their best also on abrasive and viscous product.

Power end

- Cast iron power frame
- Heavy duty and reliable power frame housing the transmission elements
- AC motor drive
- Splash type lubrication system, forced as option
- “V” belts direct drive
- Polished SS machine casing on stainless steel frame
- Special high grade Duplex / super-Duplex SS alloy compression head
- Monoblock or Multiblock VHP construction

Casing

- Polished stainless steel with removable panels for easy access and maintenance
- Stainless steel AISI304 base frame on adjustable legs

Plungers

- Chrome coated stainless steel
- Tungsten carbide coated stainless steel
- Solid ceramic
- HCR Chromium Carbide coated stainless steel

Tools and spare parts

- Ordinary maintenance tools and one set of emergency spare parts supplied with the machine
- O&M manual and spare part list on CD-ROM

Pump valves

- High wear resistant Stellite™ alloy removable seats
- Ball type (PVB) or poppet type (PVP) in solid Stellite™
- Ceramic or tungsten carbide materials available as option

Pressure measurement & control

- Sanitary design analog high pressure gauge
- Pressure transmitters and transducers available as option
- Overpressure relief valve installed on compression block

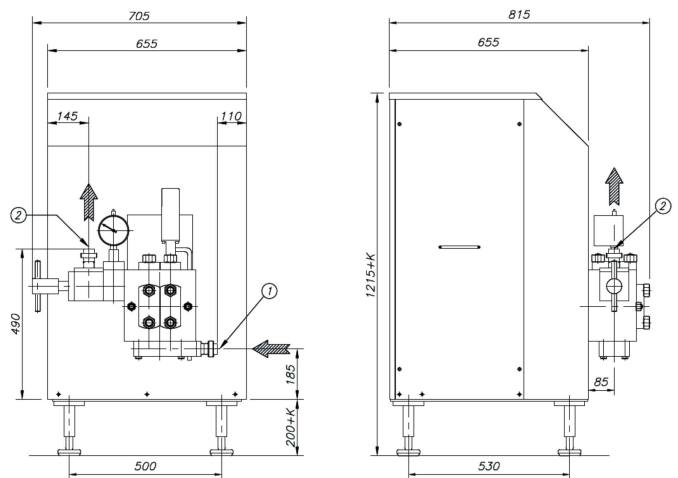
Product line connections

- DIN 11851, Tri-Clamp™, GEA Tuchenhausen Varivent™
- Others as option upon request

Main options on request

- High pressure pump version
- 2nd stage homogenizing valve
- Electric power board for fixed or variable capacity
- Machine automation and remote controls
- Aseptic execution
- 3-A execution, FDA approved gasket and cGMP documentation

Dimensional drawing



Overall dimensions (mm)

Performance

Pressure (bar)	Max Flow Rate (l/h)	Pressure (bar)	Max Flow Rate (l/h)
100	650	400	200
150	650	600	100
180	450	1000	80
200	450	1200	80
250	400	1500	35

Each line refers to a different machine, which is designed for the specific maximum pressure and the specific maximum capacity.

Design features

Number of plungers	2
Stroke	40 mm
Max. motor power	5.5 kW
Net weight	375 kg
Gross weight	515 kg
Lubricating and cooling water	40 l/h
Lubricating oil ISO VG 150	1.5 l

GEA Italy

GEA Mechanical Equipment Italia S.p.A.

Via A.M. Da Erba Edoari, 29
43123 Parma, Italy

Tel +39 0521 965 411
Fax +39 0521 242 819

info@gea.com
gea.com